

Editing Controls –Image Control

Image Control

Use this control to add an image above the Section Menu.

Images in this control are keyed to the Section Menu. The same image will show for any page in a particular Section.

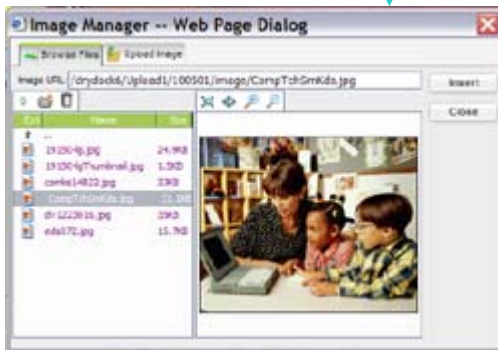
To add an image to a section, just go to any page in the section and add an image with this control.

The Image Control contains a simplified editing toolbar that can be used to add text, images and hyper-links.

For detailed information on using the toolbar, see the **Toolbar Guide**.



Clicking the **Image Manager** button opens the manager dialog box.



Use the dialog box to upload files from your computer to the web-server, and manage the files you have already uploaded.

All your image files are accessible through a folder-like interface. You can create sub-folders to group like images if needed.

The preview window allows you to view your image before inserting it.

Please note that if you move an image file after you have used it on a page, the link to it will break and the image will not show.

Uploading Images - You will be able to select, and upload an image from your computer using the Upload tab of the dialog box.

PLEASE NOTE File sizes for images that you upload should be fairly small. Images from 10KB – 300KB are ideal. Larger files will take longer to upload, and it will take longer for the page to load when visitors view the page.

Also, even with a Cable Modem or DSL connection, upload speeds are much slower than normal viewing speeds. If a file takes too long to upload, an error may occur. If your file fails to upload, please choose another file, or reduce the file size of the current file.

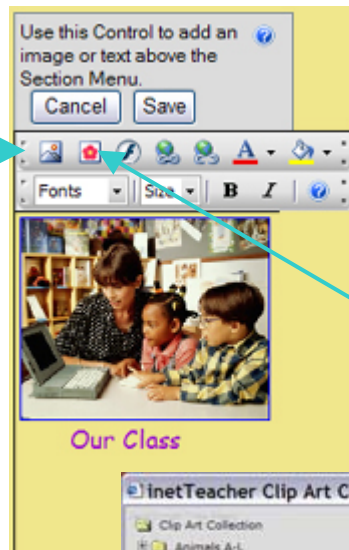


Image Control Editing

This is a view of the control with the page in **Edit Mode**.

Clicking the **Clip Art** button opens the inetTeacher clip art collection.



Browse thru the collection and select an image. The selected image will show in the window. Select **Insert** to add it to your page.

Please note: The Clip Art feature only works when you edit with Internet Explorer v5.5 or above.

A discussion of **Web Graphics** can be very complicated, and is beyond the scope of this tutorial. For more information please see: <http://hotwired.lycos.com/webmonkey/design/graphics/>

